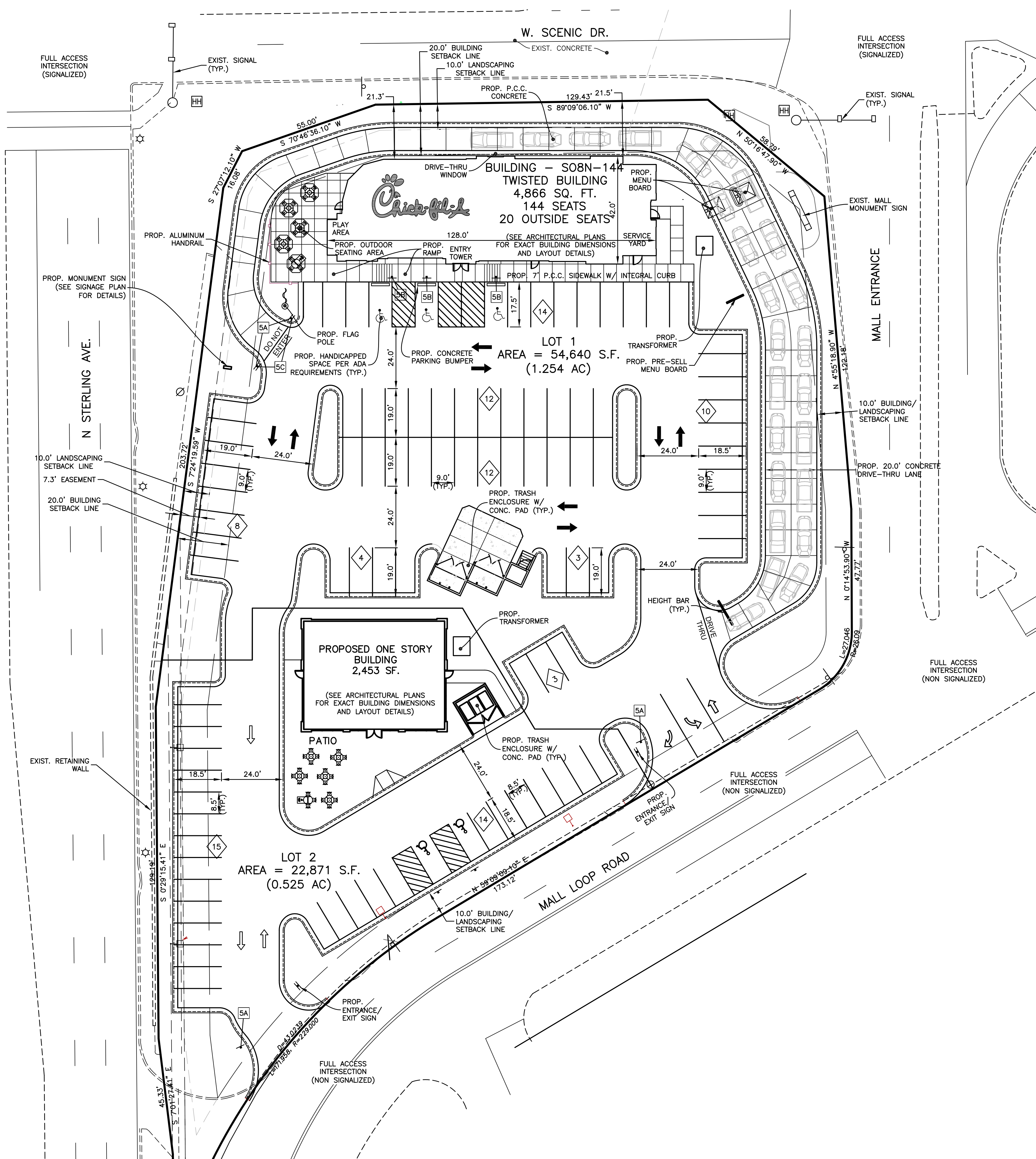


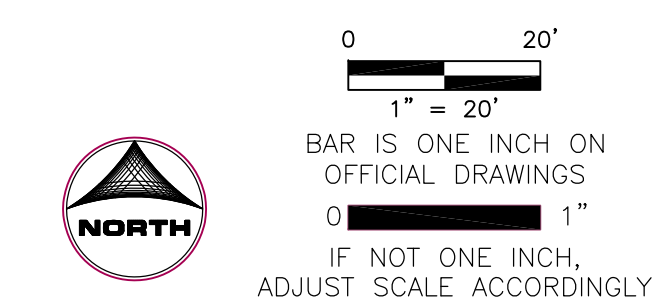
SIGN LEGEND

ALL SIGNS SHALL CONFORM TO THE "MANUAL ON UNIFORM TRAFFIC CONTROL DEVICES" BY THE U.S. DEPARTMENT OF TRANSPORTATION. (SEE SIGN LEGEND)

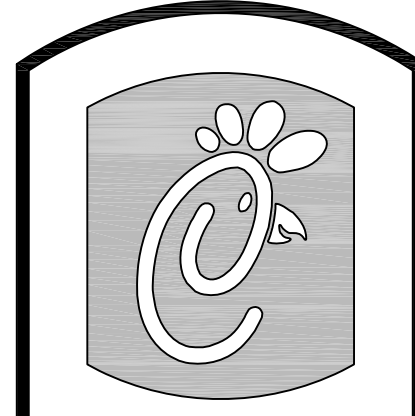
- 5A DENOTES "STOP" R1-1, 30" X 30" (TYP.)
- 5B DENOTES "HANDICAPPED PARKING" R7-8, 12" X 18" (TYP.) DENOTES "\$250 FINE" R7-1101 6" X 12" (TYP.)
- 5C DENOTES "DO NOT ENTER" R5-1, 30" X 30" (TYP.)



Plotted By: mewis, Plotted: Oct 18, 2011, 9:28am, XCS-Aerial.dwg, Images: Base.dwg, C:\Users\mewis\Documents\2011\10-18-11\10-18-11.dwg, Comp. File: (C:\Users\mewis\Documents\2011\10-18-11\10-18-11.dwg), Layout: Tab-Layout1.



PRELIMINARY
 NOT FOR CONSTRUCTION



5200 Buffington Rd.
 Atlanta Georgia,
 30349-2998

Revisions:
 Mark Date By

Mark Date By

Mark Date By

Mark Date By

HRGreen.com
 HRGreen

STORE #03003
 PEORIA
 FSR S08N-144

LOT 1
 PEORIA, IL
 61615

SHEET TITLE
 CONCEPT
 PLAN 1

DWG EDITION CONCEPT
 REVISION

Job No. : 86110300
 Store : 3003
 Date : 10/17/11
 Drawn By : MPL
 Checked By: JFV

Sheet

CON-1