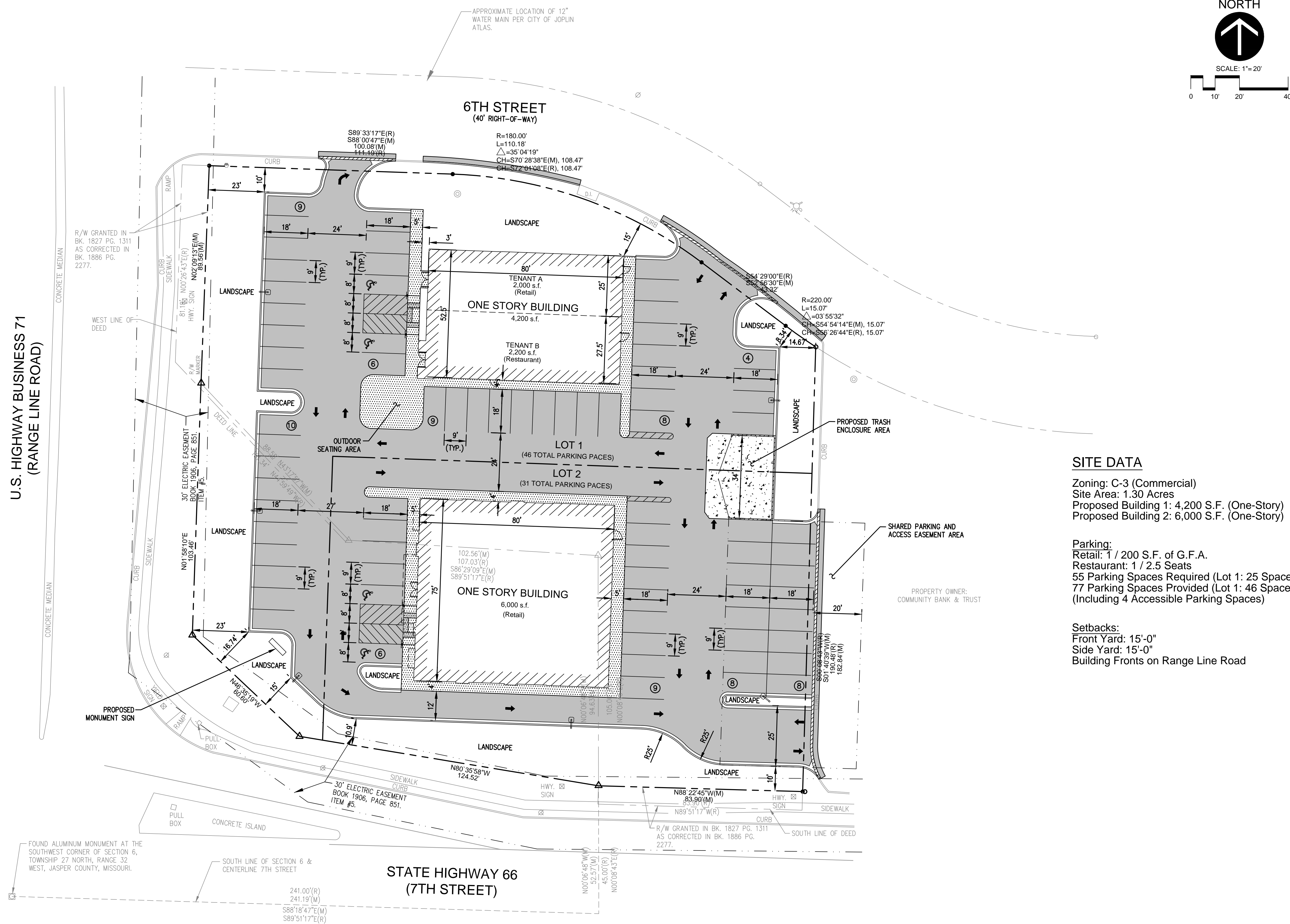


U.S. HIGHWAY BUSINESS 71
(RANGE LINE ROAD)



SITE DATA

Zoning: C-3 (Commercial)
 Site Area: 1.30 Acres
 Proposed Building 1: 4,200 S.F. (One-Story)
 Proposed Building 2: 6,000 S.F. (One-Story)

Parking:
 Retail: 1 / 200 S.F. of G.F.A.
 Restaurant: 1 / 2.5 Seats
 55 Parking Spaces Required (Lot 1: 25 Spaces, Lot 2: 30 Spaces)
 77 Parking Spaces Provided (Lot 1: 46 Spaces, Lot 2: 31 Spaces)
 (Including 4 Accessible Parking Spaces)

Setbacks:
 Front Yard: 15'-0"
 Side Yard: 15'-0"
 Building Fronts on Range Line Road

Rev.	Date	Description
1	10.16.12	Owner Revisions
2	10.17.12	Owner Revisions
3	10.29.12	Owner Revisions
4	11.13.12	Owner Revisions
5	12.21.12	Owner Revisions
6	04.11.13	Lot Split

Project #: 22120056.000
 Drawn By: BJD
 Checked By: JLG
 Issue Date: 07.25.12
 Sheet Title:

SITE PLAN

SP1.0
 Sheet: 1 of 1