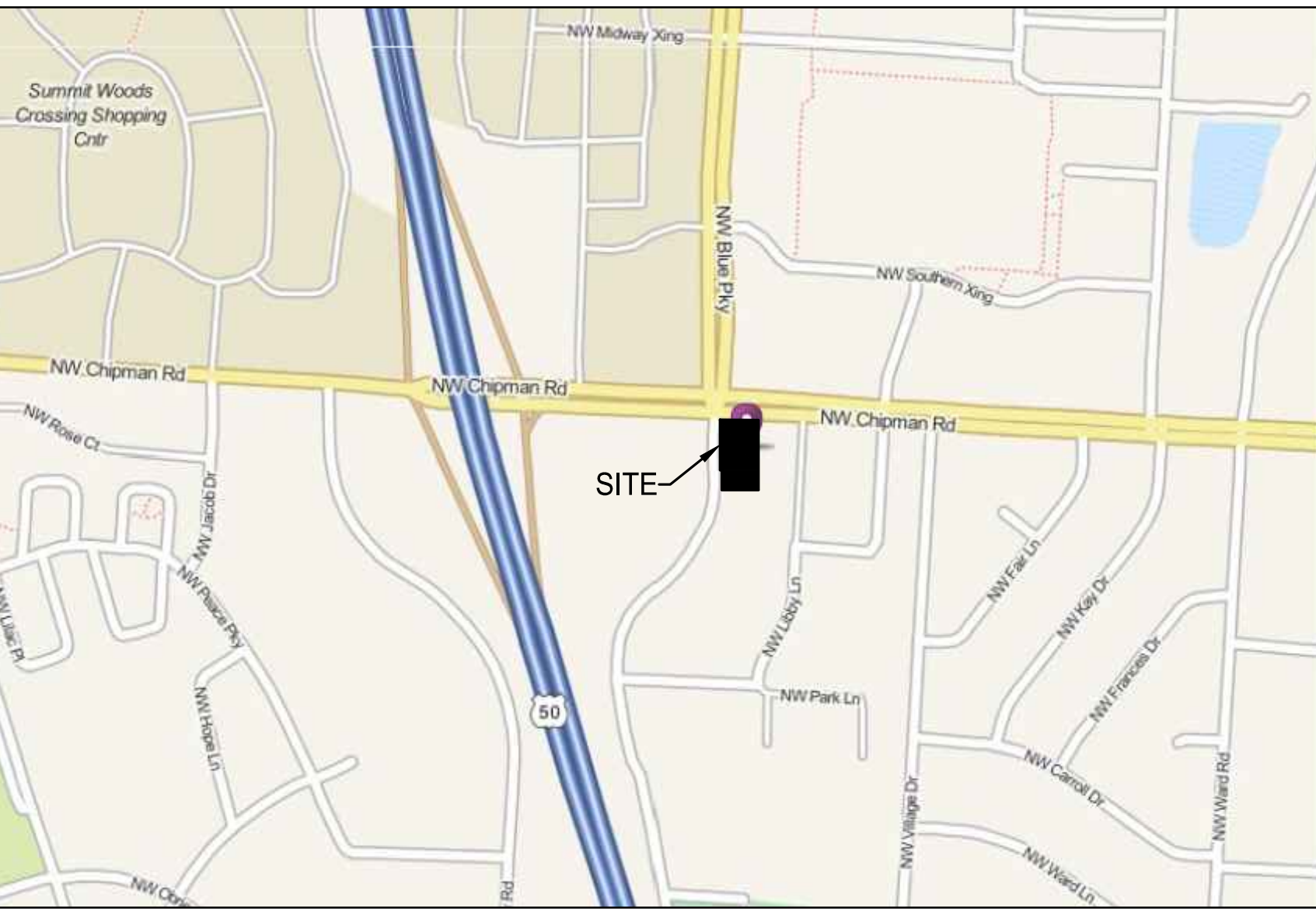
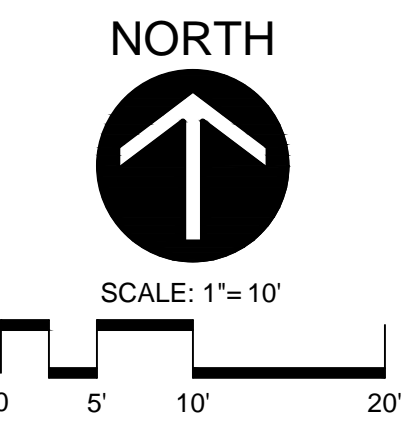
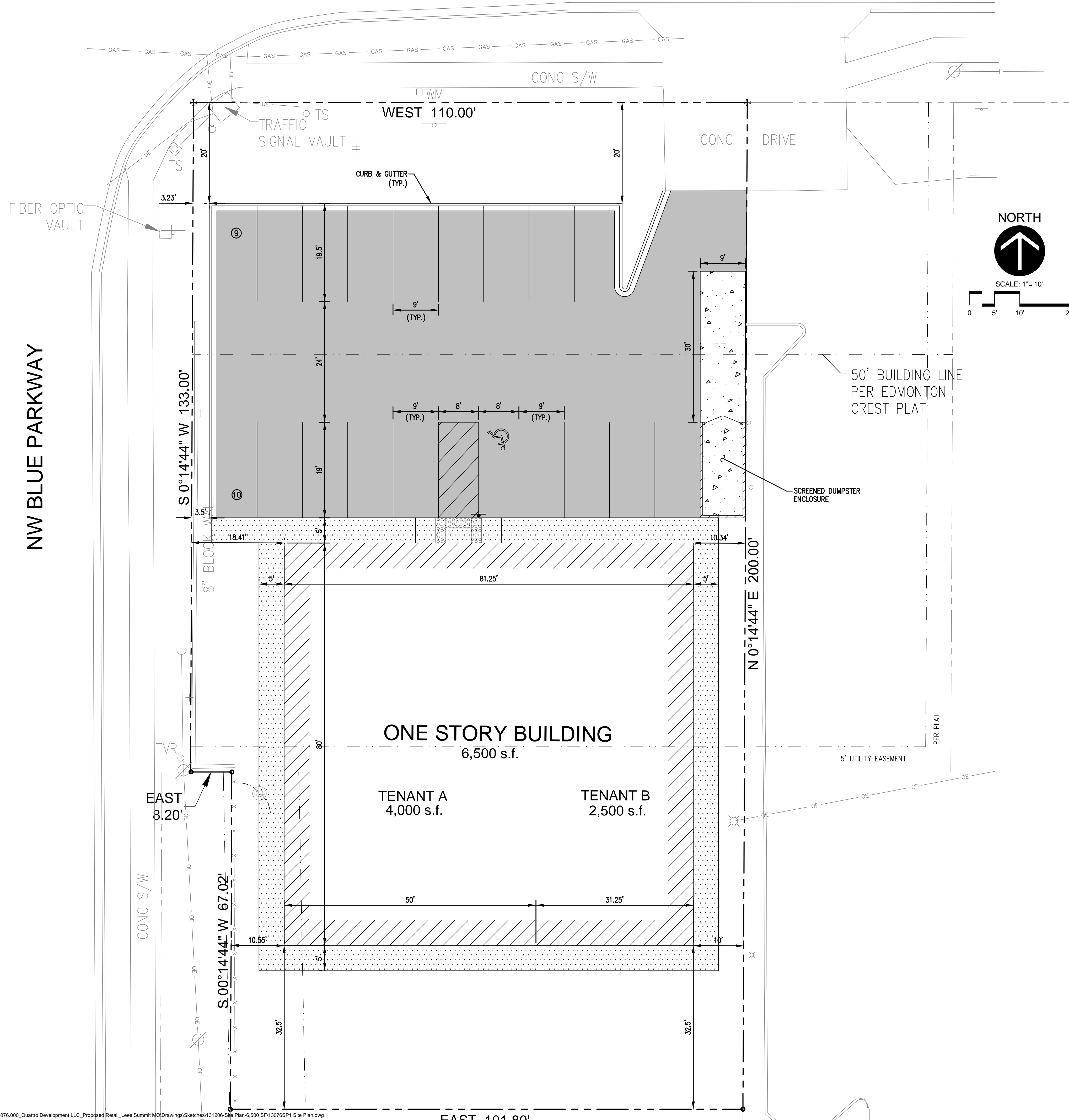


NW CHIPMAN ROAD



VICINITY MAP  
N.T.S.


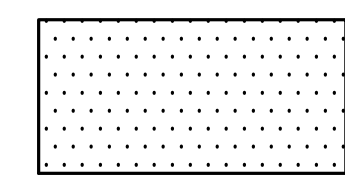
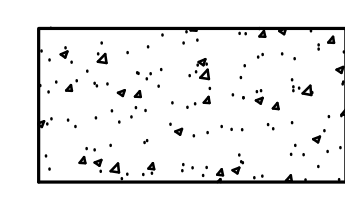
SITE DATA

Zoning: CP-2 (Planned Community Commercial/Retail)  
 Site Area: 0.49 Acres  
 Proposed Building: 6,500 S.F.

Parking:  
 Tenant A (Mattress Sales): 1.5 / 1,000 S.F. of G.F.A.  
 Tenant B (Retail): 5 / 1,000 S.F. of G.F.A.  
 19 Parking Spaces Required  
 19 Parking Spaces Provided  
 (Including 1 Van Accessible Parking Space)

Setbacks:  
 Front Yard: 50'-0"  
 Side Yard: 10'-0"  
 Rear Yard: 20'-0"  
 Buildings Fronts on NW Chipman Road

SURFACE LEGEND

	ASPHALT PAVEMENT
	CONCRETE SIDEWALK
	CONCRETE PAVEMENT

**Larson Engineering, Inc.**  
 1488 Bond Street, Suite 100  
 Naperville, IL 60563-6503  
 630.357.0540 (F) 630.357.0164  
 www.larsonengr.com  
**ILLINOIS LICENSE NO. 184-001442**  
 © 2013 Larson Engineering, Inc. All rights reserved.

**QUATTRO DEVELOPMENT, LLC**  
 1100 JORIE BOULEVARD, SUITE 238  
 OAK BROOK, IL 60523

**PROPOSED RETAIL DEVELOPMENT**  
 905 N.W. CHIPMAN ROAD  
 LEES SUMMIT, MO

Date: December 6, 2013  
 Expires: December 31, 2014

Rev.	Date	Description
1	11.26.13	Building Revisions
2	12.06.13	Building Revisions

Project #: 22130076.000  
 Drawn By: BJD  
 Checked By: CMS  
 Issue Date: 10.23.13  
 Sheet Title:

SITE PLAN

**SP1.0**  
 Sheet: 1 of 1