

NOW AVAILABLE

SELINGROVE, PA - PAD SITES AND RETAIL SPACE AVAILABLE

1,500 - 20,000 SF

2236 SUSQUEHANNA TRAIL | SELINGROVE, PA

BRAND NEW DEVELOPMENT ACROSS FROM TARGET & GIANT



Monroe Marketplace

TARGET KOHL'S GIANT

DICK'S SPORTING GOODS BUFFALO WILD WINGS LONGHORN STEAKHOUSE Michaels Where Creativity Happens

FIVE BELOW STARBUCK'S COFFEE BED BATH & BEYOND BEST BUY

RED ROBIN Moe's southwest grill... Proposed Hilton Garden Inn Famous Footwear TJ-MAXX

Dairy Queen DUNKIN' DONUTS

JOIN NEARBY RETAILERS:

KOHL'S DICK'S SPORTING GOODS

GIANT BED BATH & BEYOND

TARGET

2015 ESTIMATED DEMOGRAPHICS

	1 mile	3 miles	5 miles
POPULATION:	2,181	14,272	34,057
AVG. HOUSEHOLD INCOME:	\$79,012	\$58,993	\$60,092
DAYTIME POPULATION:	3,104	15,941	24,803

- FEATURES
- Great visibility and access from Route 15
 - Shared traffic light with Monroe Marketplace

FOR MORE INFORMATION PLEASE CONTACT

Colin Behr
Associate
+1 610 834 8000
colin.behr@cbre.com
Licensed: PA
Licensed Salesperson: NJ

Matt Mandel
Vice President
+1 610 834 8000
matt.mandel@cbre.com
Licensed: PA, DE
Licensed Salesperson: NJ

CBRE|FAMECO
CBRE, Inc.
625 West Ridge Pike; Building A; Suite 100
Conshohocken, PA 19428
T +1 610 834 8000
F +1 610 834 1793
Licensed Real Estate Broker

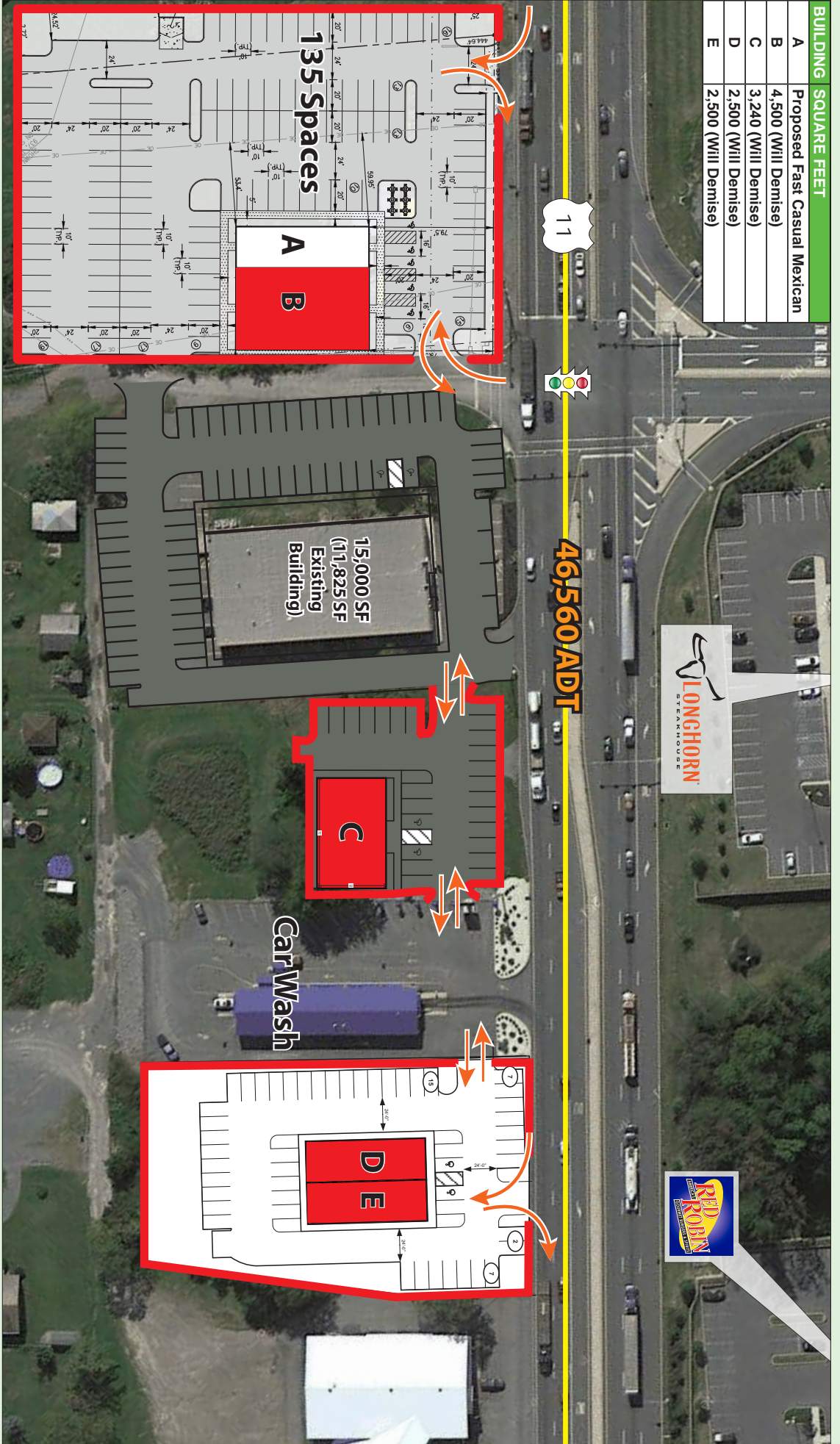
SELINGROVE, PA - PAD SITES AND RETAIL SPACE AVAILABLE

1,500 - 20,000 SF

2236 SUSQUEHANNA TRAIL | SELINGROVE, PA

BUILDING SQUARE FEET

	SQUARE FEET
A	Proposed Fast-Casual Mexican
B	4,500 (Will Demise)
C	3,240 (Will Demise)
D	2,500 (Will Demise)
E	2,500 (Will Demise)



Retail 24/7.

CBRE|FAMECO

© 2015 CBRE, Inc. This information has been obtained from sources believed reliable. We have not verified it and make no guarantee, warranty or representation about it. Any projections, opinions, assumptions or estimates used are for example only and do not represent the current or future performance of the property. You and your advisors should conduct a careful, independent investigation of the property to determine to your satisfaction the suitability of the property for your needs. CBRE and the CBRE logo are service marks of CBRE, Inc. and/or its affiliated or related companies in the United States and other countries. All other marks displayed on this document are the property of their respective owners.

NOW AVAILABLE

SELINGROVE, PA - PAD SITES AND RETAIL SPACE AVAILABLE

2236 SUSQUEHANNA TRAIL | SELINGROVE, PA

CBRE | FAMECO

