

LOT 7
BLOCK 73
 PER VOLUME 9613, PAGE 143
 MARCOSTA BELLA LP
 PARCEL No. 16334-073-0070

PARCEL III
 NON-EXCLUSIVE ACCESS,
 INGRESS, EGRESS
 EASEMENT
 DOCUMENT NO. 2010069174,
 BOOK 14447, PAGE 816

PARCEL I
LOT 2
BLOCK 73
 PER VOLUME 9613, PAGE 143
 GHMSA LLC
 PARCEL No. 16334-073-0020
 1 STORY BUILDING
 ±10,422 SQUARE
 FEET 35' HIGH
 #1623

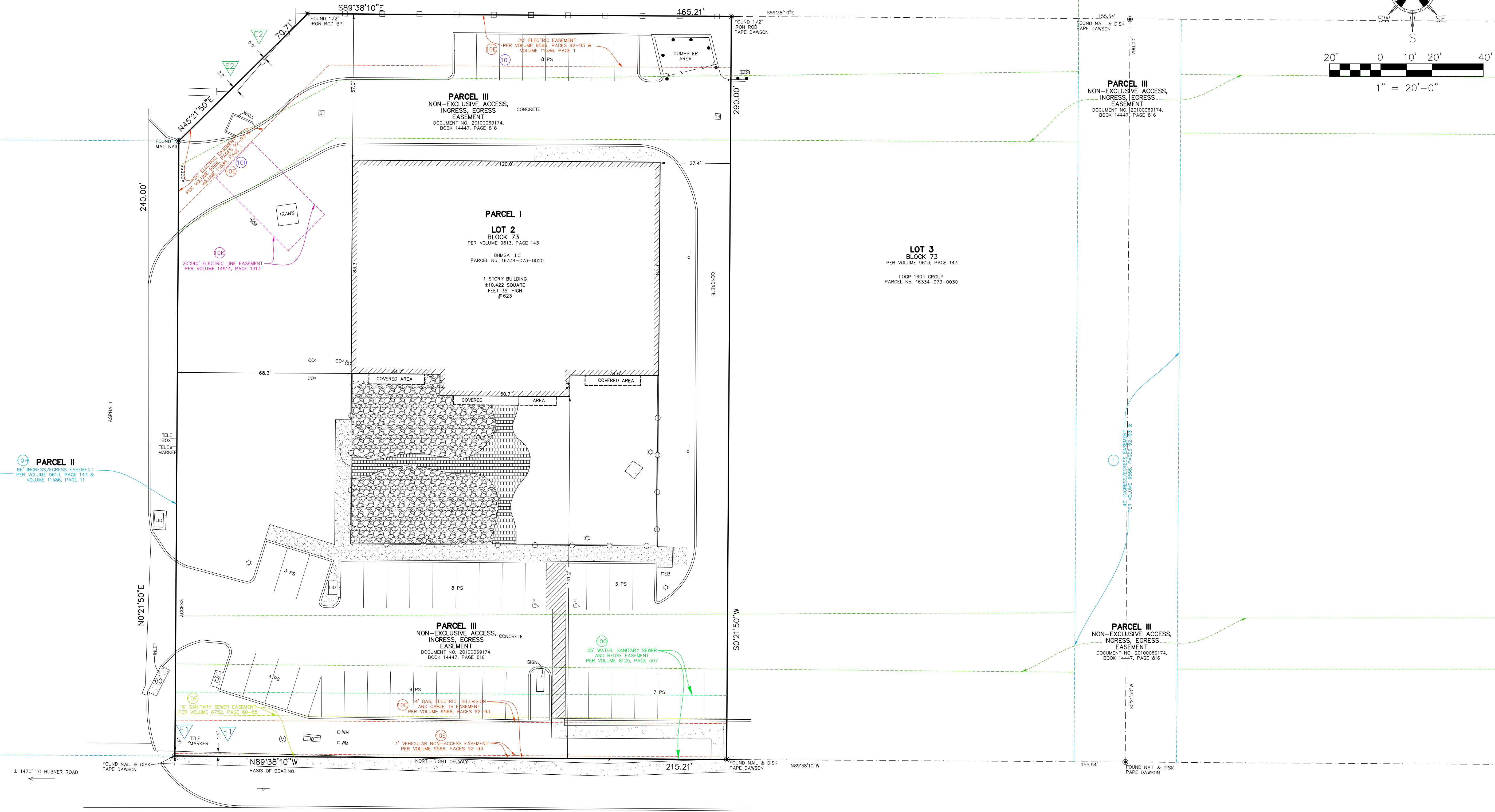
LOT 3
BLOCK 73
 PER VOLUME 9613, PAGE 143
 LOOP 1604 GROUP
 PARCEL No. 16334-073-0030

LOT 1
BLOCK 73
 PER VOLUME 9613, PAGE 143
 MARCOSTA BELLA LP
 PARCEL No. 16334-073-0070

PARCEL II
 86' INGRESS/EGRESS EASEMENT
 PER VOLUME 9613, PAGE 143 &
 VOLUME 11586, PAGE 11

PARCEL III
 NON-EXCLUSIVE ACCESS,
 INGRESS, EGRESS
 EASEMENT
 DOCUMENT NO. 2010069174,
 BOOK 14447, PAGE 816

PARCEL III
 NON-EXCLUSIVE ACCESS,
 INGRESS, EGRESS
 EASEMENT
 DOCUMENT NO. 2010069174,
 BOOK 14447, PAGE 816



NORTH LOOP 1604 WEST
 460' PUBLIC RIGHT OF WAY
 (ASPHALT ROAD)

REVISIONS

Date	Revision	By
10/28/20	Add Zoning Information	DMD
11/03/20	Update Title	DMD
11/04/20	Update Title	DMD

ALTA/NSPS LAND TITLE SURVEY

PARTNER
 Engineering and Science, Inc.[®]

CORPORATE OFFICE
 2154 TORRANCE BLVD.
 TORRANCE, CA 90501 888-213-7479
 ALTA@partneresi.com

COPYRIGHT 2016
 PARTNER ENGINEERING &
 SCIENCE, INC.
 ALL RIGHTS RESERVED.
 NO PART OF THIS DOCUMENT IS
 TO BE REPRODUCED OR
 TRANSMITTED IN ANY FORM OR
 BY ANY MEANS, WITHOUT THE
 WRITTEN PERMISSION OF
 PARTNER ENGINEERING &
 SCIENCE, INC.