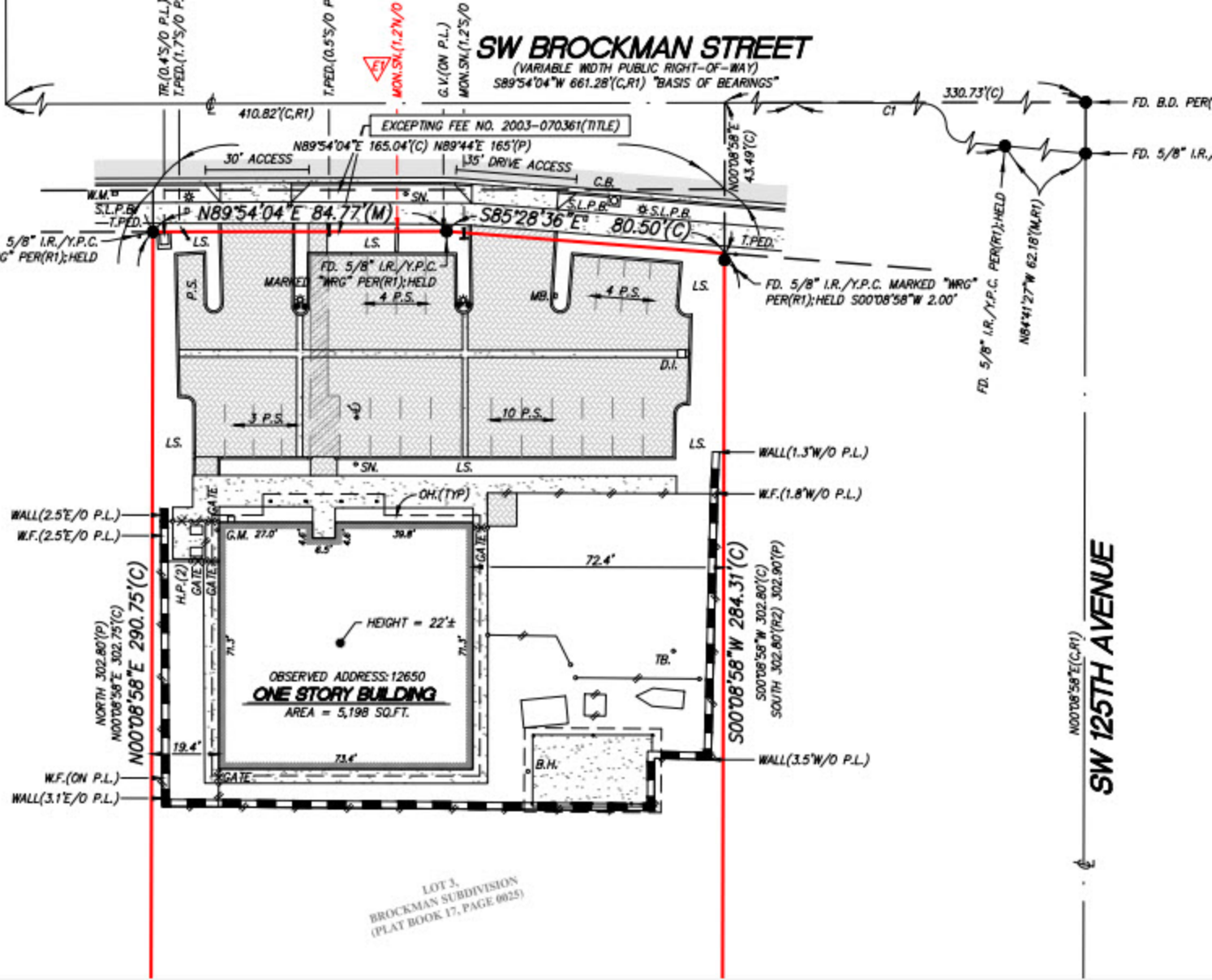


SW BROCKMAN STREET

(VARIABLE WIDTH PUBLIC RIGHT-OF-WAY)
 SB89°54'04"W 661.28'(C,R1) "BASIS OF BEARINGS"



LOT 3,
 BROCKMAN SUBDIVISION
 (PLAT BOOK 17, PAGE 0025)

OBSERVED ADDRESS: 12650
ONE STORY BUILDING
 AREA = 5,198 SQ.FT.

EXCEPTING FEE NO. 2003-070361 (TITLE)

FD. 5/8" I.R./Y.P.C. MARKED "WRG" PER(R1); HELD

FD. 5/8" I.R./Y.P.C. MARKED "WRG" PER(R1); HELD 500'08"58"W 2.00'

FD. 5/8" I.R./Y.P.C. PER(R1); HELD
 NB4°41'27"W 62.18'(M,R1)

SW 125TH AVENUE

N00°08'58"E(C,R1)

S00°08'58"W 284.31'(C)

S00°08'58"W 302.80'(C)
 SOUTH 302.80'(R2) 302.90'(P)

N00°08'58"E 290.75'(C)

NORTH 302.80'(P)
 N00°08'58"E 302.75'(C)

W.F.(2.5'E/O P.L.)
 W.F.(2.5'E/O P.L.)

W.F.(ON P.L.)
 WALL(3.1'E/O P.L.)

WALL(1.3'W/O P.L.)

W.F.(1.8'W/O P.L.)

WALL(3.5'W/O P.L.)

TR(0.4'5/O P.L.)
 T.PED.(1.75'/O P.L.)

T.PED.(0.15'/O P.L.)

MON.SN.(1.2'N/O)

G.V.(ON P.L.)
 MON.SN.(1.2'5/O)

330.73'(C)

FD. B.D. PER

FD. 5/8" I.R.

2. 5/8" I.R./Y.P.C. MARKED "WRG" PER(R1); HELD

S.L.P.B. (ON P.L.)
 T.PED.

S.L.P.B. (ON P.L.)

S.L.P.B. (ON P.L.)

30' ACCESS

35' DRIVE ACCESS

C.B.

W.M. (ON P.L.)

P.S.

4 P.S.

4 P.S.

LS.

LS.

LS.

LS.

LS.

LS.

LS.

LS.

LS.

LS.

LS.

LS.

LS.

LS.

LS.

LS.

LS.

LS.

LS.

LS.

LS.

LS.

LS.

LS.

LS.

LS.

LS.

LS.

LS.

LS.

LS.

LS.

LS.

LS.

LS.

LS.