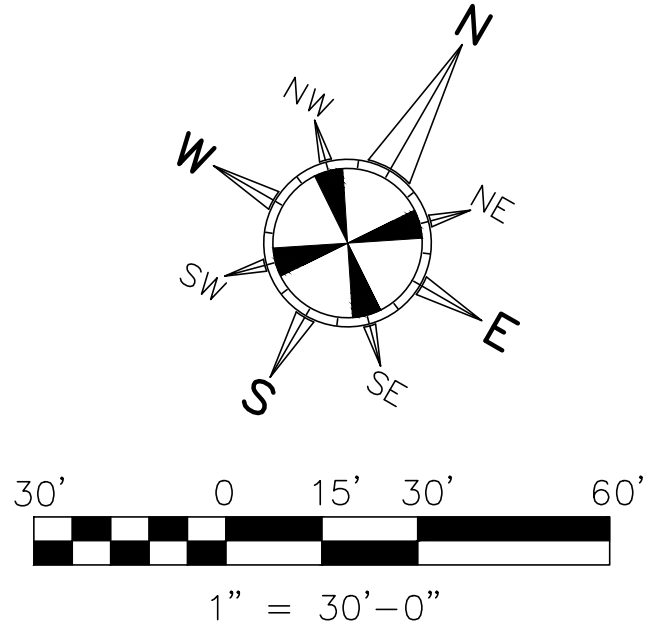
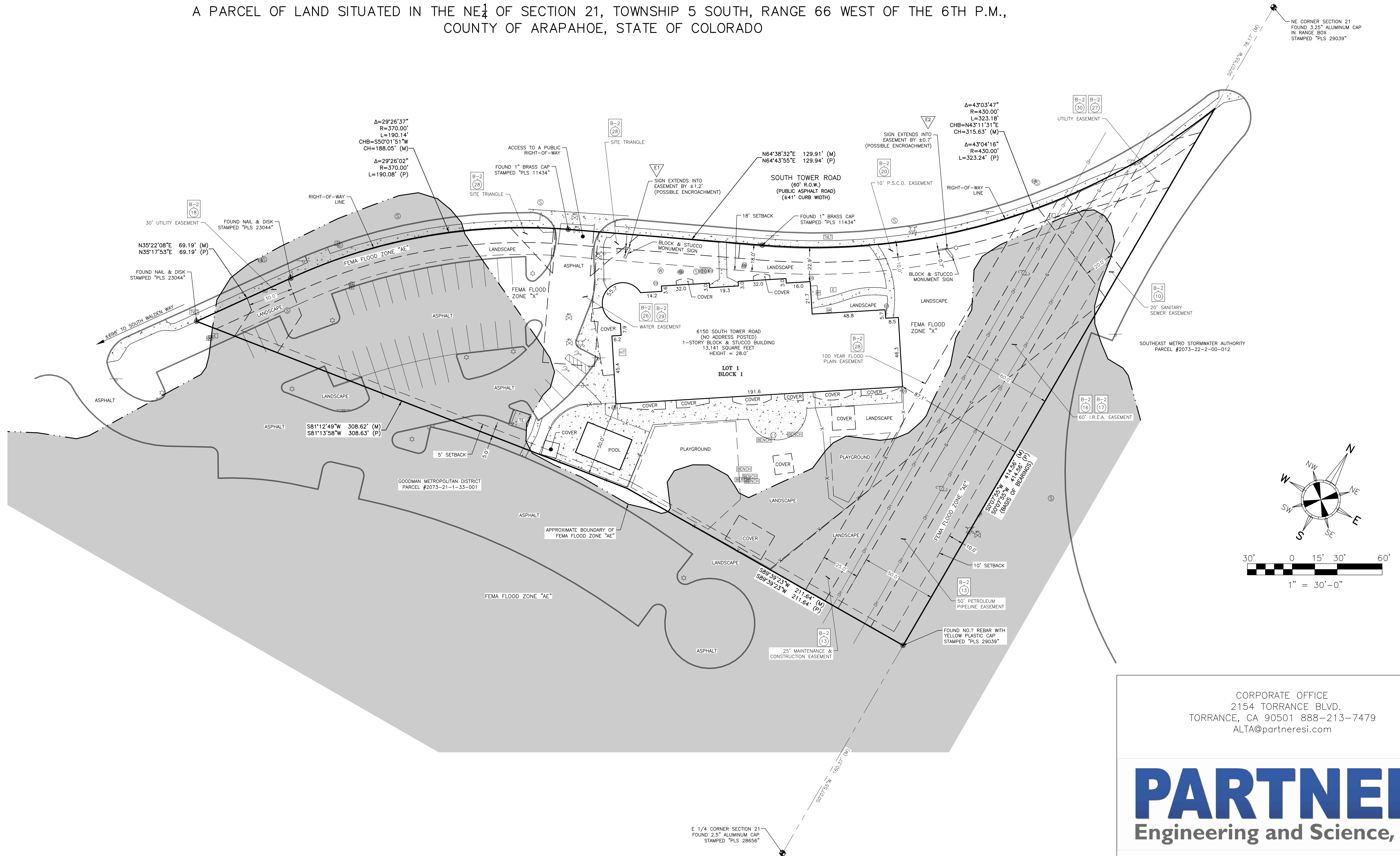


A.L.T.A./N.S.P.S. LAND TITLE SURVEY

A PARCEL OF LAND SITUATED IN THE NE $\frac{1}{4}$ OF SECTION 21, TOWNSHIP 5 SOUTH, RANGE 66 WEST OF THE 6TH P.M.,
COUNTY OF ARAPAHOE, STATE OF COLORADO



CORPORATE OFFICE
2154 TORRANCE BLVD.
TORRANCE, CA 90501 888-213-7479
ALTA@partneresi.com

PARTNER

Engineering and Science, Inc.®

PARTNER ENGINEERING & SCIENCE, INC. ALL RIGHTS RESERVED. THIS FORMAT IS WITHOUT WRITTEN CONSENT OF PARTNER ENGINEERING.