

**LOT 7  
BLOCK 73**  
PER VOLUME 9613, PAGE 143  
MARCOSTA BELLA LP  
PARCEL No. 16334-073-0070

**PARCEL III  
NON-EXCLUSIVE ACCESS,  
INGRESS, EGRESS  
EASEMENT**  
DOCUMENT NO. 2010069174,  
BOOK 14447, PAGE 816

**PARCEL I  
LOT 2  
BLOCK 73**  
PER VOLUME 9613, PAGE 143  
GHMSA LLC  
PARCEL No. 16334-073-0020

1 STORY BUILDING  
±10,422 SQUARE  
FEET 35' HIGH  
#1623

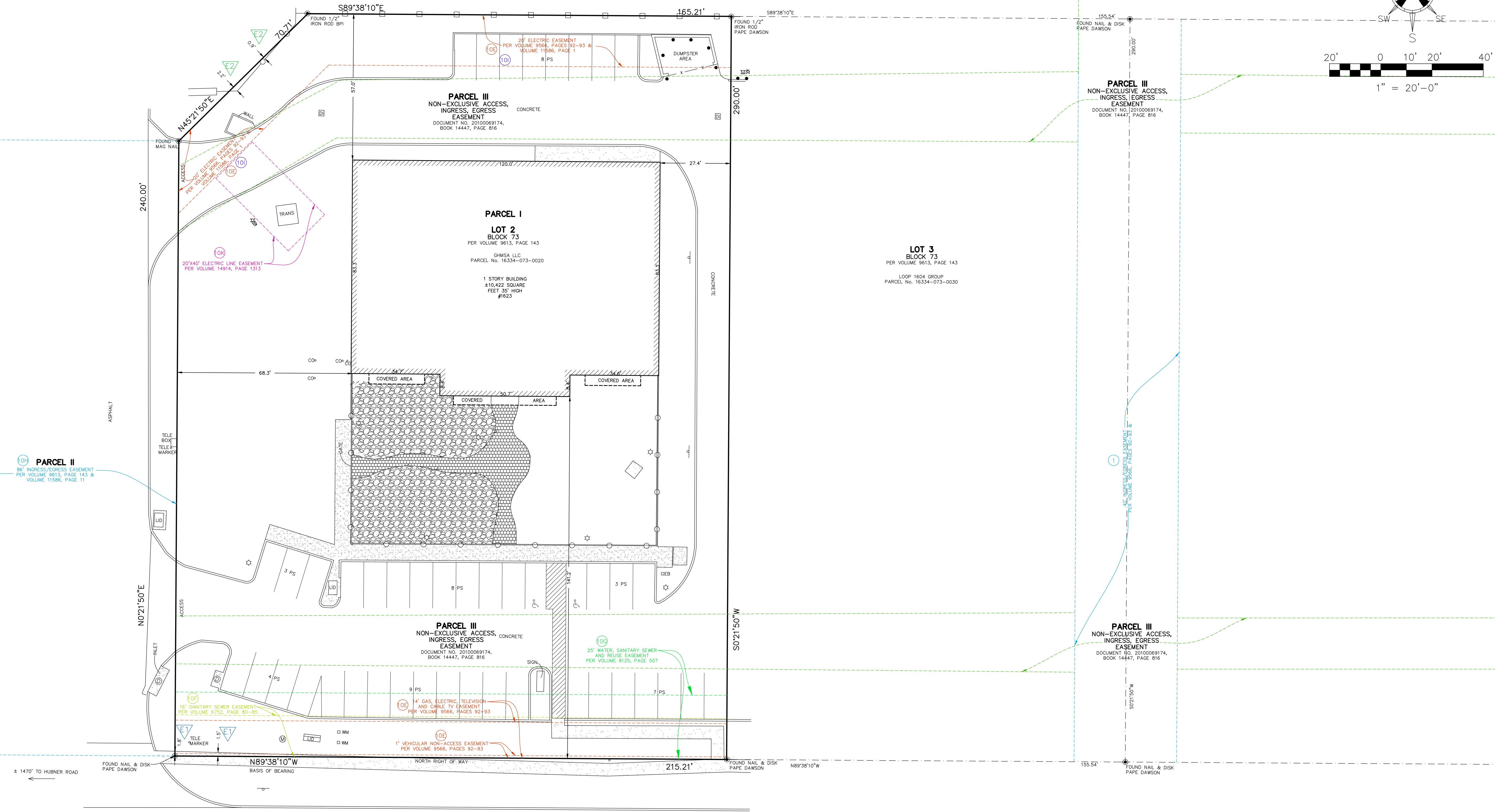
**LOT 3  
BLOCK 73**  
PER VOLUME 9613, PAGE 143  
LOOP 1604 GROUP  
PARCEL No. 16334-073-0030

**LOT 1  
BLOCK 73**  
PER VOLUME 9613, PAGE 143  
MARCOSTA BELLA LP  
PARCEL No. 16334-073-0070

**PARCEL II**  
86' INGRESS/EGRESS EASEMENT  
PER VOLUME 9613, PAGE 143 &  
VOLUME 11586, PAGE 11

**PARCEL III  
NON-EXCLUSIVE ACCESS,  
INGRESS, EGRESS  
EASEMENT**  
DOCUMENT NO. 2010069174,  
BOOK 14447, PAGE 816

**PARCEL III  
NON-EXCLUSIVE ACCESS,  
INGRESS, EGRESS  
EASEMENT**  
DOCUMENT NO. 2010069174,  
BOOK 14447, PAGE 816



**NORTH LOOP 1604 WEST**  
460' PUBLIC RIGHT OF WAY  
(ASPHALT ROAD)

**REVISIONS**

Date	Revision	By
10/28/20	Add Zoning Information	DMD
11/03/20	Update Title	DMD

ALTA/NSPS LAND TITLE SURVEY

**PARTNER**  
Engineering and Science, Inc.®

CORPORATE OFFICE  
2154 TORRANCE BLVD.  
TORRANCE, CA 90501 888-213-7479  
ALTA@partneresi.com

COPYRIGHT 2016  
PARTNER ENGINEERING &  
SCIENCE, INC.  
ALL RIGHTS RESERVED.  
NO PART OF THIS DOCUMENT IS  
TO BE REPRODUCED OR  
TRANSMITTED IN ANY FORM OR  
BY ANY MEANS, WITHOUT THE  
WRITTEN PERMISSION OF  
PARTNER ENGINEERING &  
SCIENCE, INC.